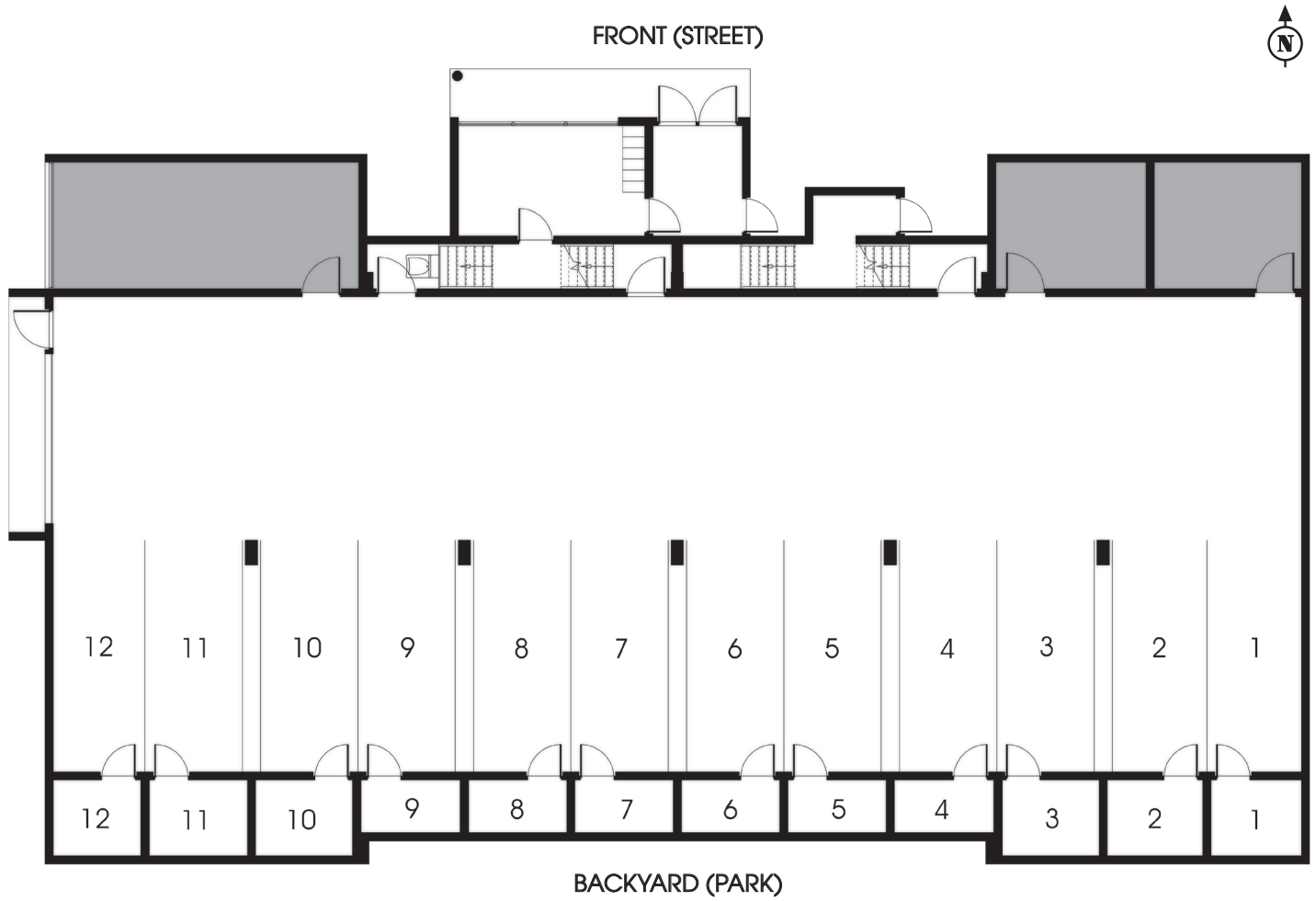


THE HAMEAU 1

CONDOS

BASEMENT-PARKING



- / HEATED INDOOR PARKING
- / ROOMY STORAGE LOCKERS

* All surface areas and measurements are approximate. Floor areas are measured in accordance with architectural plans. Living spaces will vary from floor areas specified.

VIA
SAUVAGIA

CONDOS | TOWNHOUSES | SINGLE-FAMILY HOMES

MOUNTAINSIDE LIVING

CONDOMINIUMS AT THE FOOT OF THE SLOPES

Designed by renowned architect Pierre Thibault, our co-ownership apartments situated at the foot of Mont Sauvage in Val-Morin will satisfy the tastes of the most demanding buyers.

OVERALL FEATURES*

- / Areas ranging from 730 sq. ft. to 1,461 sq. ft. (1, 2 and 3 bedrooms)
- / Contemporary architecture with open floor plan
- / Roomy and functional layout
- / Floor-to-ceiling windows offering generous lighting
- / High performance insulation and soundproofing
- / Large loggias with views on the park
- / Careful and sophisticated finish
- / Hard wood floors
- / Fashionable kitchens with quartz countertops
- / Glass showers and high-end bath fittings
- / Abundant storage space
- / En suite high efficiency forced-air heating and air conditioning systems, heat pumps (optional)
- / Gas fireplaces (optional)
- / Indoor parking spaces with lockers available (optional)
- / Digital television, high-speed cable Internet and telephony available
- / Serviced by the municipal water supply and a common sewage system
- / Direct link to private ski trails and recreational paths
- / Delivery expected in fall 2013

SERVICES INCLUDED

- / Lighting and snow removal on private roads
- / Landscaping and maintenance of common areas
- / Domestic garbage and recycling collection
- / Maintenance of recreational paths and parks
- / Operation of private ski slopes and ski lifts

 **VIA
SAUVAGIA
IMMOBILIER
VERSANT NORD
INC.**
RBQ licence: 5654-0271-01



FINANCIAL PARTNER



COME AND SEE THE MODEL UNIT

3960, Mont-Sauvage Road
Sainte-Adèle, QC J8B 2E3

1 855 728-8243

viasauvagia.com

* All surface areas and measurements are approximate. Floor areas are measured in accordance with architectural plans. Living spaces will vary from floor areas specified. All prices, materials, drawings and specifications are subject to change without notice. All illustrations, imagery and photographs are for illustrative purposes only and are intended to evoke a potential lifestyle. The developers expressly reserve the right to make changes.